

RiskVal MTS Module

RISKVAL PRE-TRADE ANALYTICS (RVFI)

RiskVal's Relative Value Fixed Income (RVFI) is a multi-currency and multi-strategy pre-trade system. It allows traders and portfolio managers to run an in-depth analysis using relative value metrics and measures to generate new trading strategies and maximize alpha. RVFI is a ready-to-use SaaS (Software as a Service) platform installed natively on each user's PC. RVFI covers all interest rate instruments, from cash and plain vanilla securities to exotic derivatives over the universe of G30 currencies. RVFI's risk management framework is carefully designed to provide intraday front office risks and P&L management.

RVFI has more than 200 relative value trading strategies which we developed over the last 19 years based on our close relationship with elite traders in top Wall Street institutions. RiskVal financial engineering captures the very latest intellectual property of the most current issues. Over the years, RVFI has become a de facto pre-trade analytic tool for trading desk. The entire analytics libraries are home grown by our financial engineering team no external commercial libraries are needed, such that we can fully fine tune for performance and accuracy.

MTS EXECUTION PLATFORM

RiskVal's new MTS Cash service for our Euro govt clients integrates MTS Cash data directly into RVFI, enabling traders to access MTS prices, market depths, and liquidity data side by side with RiskVal's cutting edge relative value analysis for fast trade identification. RiskVal's MTS service also comes with Order Management (OM) service, seamlessly integrating with MTS' BondVision (BV) platform such that traders can submit trades directly from RVFI to BV. RiskVal's MTS service offers the best of RiskVal pre-trade analytics with MTS Cash + BV to improve trading profitability for our clients.

MTS SPECIFIC COLUMNS & SHEETS

The RVFI MTS service enhances the EUR Bond Roll sheet and EUR Sprd/Bfly with live price and transacted volume data as well as Market Depth.

Live Prices, Transacted Volumes and Market Depth

EUR Bond											
Desktop Window Tools Preferences Help ▶ Market View											
<div> <div>EUR Bond</div> <div>USD Bond</div> <div>Fwd SwapMatrix</div> <div>Swap Box</div> <div>Fut CTD</div> <div>Trade Blotter</div> </div>											
<div> <div>Blotter</div> <div>IT ALL</div> <div>IT Lo</div> <div>IT Hi</div> <div>DE</div> <div>FR</div> <div>ES</div> <div>BE</div> </div>											
<div> <div>Sctr ALL</div> <div>Orig</div> <div>Country</div> <div>Mty Sctr:</div> <div>Iss(\$B):</div> <div>To</div> <div>Cpn:</div> <div>To</div> <div>FH(%):</div> <div>To</div> </div>											
		Country	Px	Yld	dYld	3M Repo	MTS B/O Price	MTS B/O Yld	MTS B/O Sz	MTS Vol @MM	MTS B/S Ratio
	BTPS 0.300 15-Aug-2023	Italy	100.567	0.106	(2.6)	(0.503)	100.550/100.580	0.112/0.101	20.5x46.0	275.5 (255.5/20)	
	BTPS-5Y 2.450 01-Oct-2023	Italy	107.161	0.101	(1.9)	(0.503)	107.130/107.170	0.111/0.099	60.5x18.0	100 (0/100)	
	BTPS 0.650 15-Oct-2023	Italy	101.732	0.089	(2.2)	(0.503)	101.700/101.740	0.099/0.086	2.0x11.0	53.5 (40/13.5)	
	BTPS 9.000 01-Nov-2023	Italy	127.865	0.080	(2.4)	(0.503)	127.830/127.880	0.089/0.076	47.5x30.0	17.5 (12/5.5)	
	BTPS 4.500 01-Mar-2024	Italy	114.920	0.187	(2.1)	(0.503)	114.880/114.920	0.198/0.187	63.5x12.0	20 (0/20)	
	BTPS 1.850 15-May-2024	Italy	105.983	0.215	(2.5)	(0.503)	105.950/105.980	0.224/0.216	56.0x2.0	57 (0/57)	
	BTPS 1.750 01-Jul-2024	Italy	105.635	0.261	(2.4)	(0.503)	105.600/105.650	0.270/0.257	61.5x61.5	8 (8/0)	
	BTPS 3.750 01-Sep-2024	Italy	113.588	0.306	(2.3)	(0.503)	113.560/113.600	0.313/0.303	53.5x46.0	24 (0/24)	
	BTPS 1.450 15-Nov-2024	Italy	104.763	0.302	(2.5)	(0.503)	104.730/104.770	0.310/0.300	44.5x49.0	5 (5/0)	
	BTPS 2.500 01-Dec-2024	Italy	109.029	0.344	(2.3)	(0.503)	108.990/109.040	0.353/0.341	42.0x49.0	35.5 (0/35.5)	
	BTPS 0.350 01-Feb-2025	Italy	99.997	0.351	(2.4)	(0.503)	99.960/100.000	0.359/0.350	44.5x38.0	79.5 (62.5/17)	
	BTPS 5.000 01-Mar-2025	Italy	120.487	0.376	(2.4)	(0.503)	120.450/120.490	0.384/0.376	36.5x27.0	2 (2/0)	
	BTPS 1.450 15-May-2025	Italy	104.769	0.420	(2.5)	(0.503)	104.720/104.780	0.430/0.417	46.0x25.0	160 (69/91)	
	MFB20		126.240	0.461	(2.9)						
	BTPS 1.500 01-Jun-2025-MFB20	Italy	105.031								
	BTPS 1.850 01-Jul-2025	Italy	106.631								
	MFBH1		126.240								
	BTPS 2.500 15-Nov-2025-MFBH1	Italy	110.281								
	BTPS 2.000 01-Dec-2025	Italy	107.793								
	BTPS 0.500 01-Feb-2026	Italy	99.682								
	BTPS 4.500 01-Mar-2026	Italy	121.216								
	BTPS 1.600 01-Jun-2026	Italy	105.849								
	BTPS 2.100 15-Jul-2026	Italy	108.565								
	BTPS 7.250 01-Nov-2026	Italy	139.793								
	BTPS 1.250 01-Dec-2026	Italy	103.808								
	BTPS 0.850 15-Jan-2027	Italy	101.150								
	BTPS 2.200 01-Jun-2027	Italy	109.843								
	BTPS 2.050 01-Aug-2027	Italy	108.821								
	BTPS 0.950 15-Sep-2027	Italy	101.163								
	BTPS 6.500 01-Nov-2027	Italy	139.402								
	BTPS 2.000 01-Feb-2028	Italy	108.694								
	BTPS 4.750 01-Sep-2028	Italy	130.012								
	BTPS 2.800 01-Dec-2028	Italy	115.385								
	IKZ0		145.040								

MTS Market Depth: BTPS 1.450 15-May-2025

	Bid Sz	Bid Yld	Bid Px	Ask Px	Ask Yld	Ask Sz
1	46.000	0.430	104.720	104.780	0.417	25.000
2	25.500	0.432	104.710	104.790	0.415	24.500
3	10.000	0.434	104.700	104.800	0.413	10.000
4				104.810	0.411	16.000
5				104.820	0.409	6.000

Aggregated Traded Volume (@MM)

Today	WTD	MTD	QTD	YTD
160 (69/91)	160	343	2,486	4,406

SEAMLESS INTEGRATION TO EXECUTE TRADES

Using RiskVal's proprietary RV measures like the popular CMT curve to identify profitable trades, coupled with MTS liquidity data, traders can quickly discover, build and send these strategies from RVFI directly to MTS BV to be executed.

EUR Sprd/Bfly

EUR Sprd/Bfly

MTS main country spread

Corr BMs: 10 Curve: 2/10 Last Saved: 04:31:51P

	Sprd Bfly	Sprd	dSprd	dSprd /Stddev_d	Sprd Rich-+Chp	Sprd ZS	MTS Sprd B/O	MTS Mid/Sprd	Weight	Mean	Stdev	Stdev_d	Expt Return	MR Return	3M C+R	3M C+R ZS	3M C	3M R CMT	CT10 Corr	C' Bt
1	BTPS 2.5 N25/BTPS 4.5 326	7.2	(0.5)	(1.0)		1.4	(9.6)/(15.8)	(12.788)/6.2	-1/1	5.8	1.0	0.5	1.7	1.4	0.3	1.1	0.3	(0.1)	0.02	
2																				

Construct BV Trade: BTPS 2.5 N25/BTPS 4.5 326

Table ☐ Flip Minimum Notional 100,000 ☒ Auto Hedge

Bond	MTS Buy/Sell	Notional @MM	MTS Px	MTS Yld	RV Yld	DV01	Total	ISIN	Wgt	MTS Bid Yld	MTS Ask Yld	MTS Bid Yld	MTS Ask Yld	PreAdjusted Notional	Settle Date
1 BTPS 2.5 N25	Sell	11.1	111.760	0.214	0.487						111.940	0.214	0.181	(11,129,139)	11-Sep-2020
2 BTPS 4.5 326	Buy	10.0	124.280	0.056	0.559						124.280	0.085	0.056	10,000,000	11-Sep-2020
3															
4 Sprd				(15.8)	7.2										

Confirm BV Trade

Sell 11.1mm BTPS 2.5 N25, Buy 10mm BTPS 4.5 326.

Add comment:

Confirm Cancel

Sell 11.1mm BTPS 2.5 N25, Buy 10mm BTPS 4.5 326.

Send to Bond Vision (UAT)

Cancel

MTS BondVision

MENU ORDERS TRADING BLOTTER DATA ALERTS

OPEN RFQ Search Bonds ...

Status All (55/55) Done (29/55) Not Done (26/55) Cancelled (0/55) Timed AutoEx (0/55)

LINK	CREAT...	STATUS	SIDE	CLASS	DESCRIPTION	ISIN	MATURITY	SIZE (MM)	EXEC. SIZE...	WORK. TRADER
	13:19:54	NEW	Sell	DEM	DBR 0 15/05/35	DE0001102515	15/05/2035	39.4		

1 RFQ SWITCH - Stage Order #100000021 - Stage Order #200000033

TRANSPARENCY		PRE-TRADE		Leg 1		Leg 2		POST-TRADE		Leg 1		Leg 2		Altair / Altair / Client ID	
SIDE	DESCRIPTION	ISIN	SIZE (MM)	SETTL	DATE	BV Bid/Ask	YTM	PRINCIPAL	ACCRUED / DAYS	PROCEEDS	DV01	ALLOCATION	INFO		
BUY	DBR 4.750 04/07/34	DE0001135226	37.85	T + 2	16/03/2023	122.1407	2.4784	46,230,254.95	1,256,049.66 / 255	EUR 47,486,304.61	40,700.11	+			
SELL	DBR 1.700 15/08/32	DE0001102606	36.3	T + 2	16/03/2023	93.8964	2.4323	34,084,393.20	424,361.92 / 251	EUR 34,508,755.12	28,470.09	+			

YIELD SPREAD +4.61 PROCEEDS SPREAD EUR -12,977,549.49

DEALER RESPONSES

DEALER	SIDE	PRICE	YIELD	YIELD SPREAD	PRCDS SPREAD (EUR)	STATUS	TIME	ACTION
_D04	BUY	122.1362	+2.4788	+4.7	-12,974,539.44	Quote	8	ACCEPT
	SELL	93.9	+2.4318					
_D06	BUY	122.1359	+2.4789	+4.71	-12,974,280.69	Quote	8	ACCEPT
	SELL	93.9004	+2.4318					
_D11	BUY	122.1392	+2.4786	+4.63	-12,977,090.64	Quote	8	ACCEPT
	SELL	93.8961	+2.4323					
_D12	BUY	122.1383	+2.4787	+4.64	-12,976,713.69	Quote	8	ACCEPT
	SELL	93.8962	+2.4323					
_D19	BUY	122.1389	+2.4788	+4.67	-12,975,675.59	Quote	9	ACCEPT
	SELL	93.8976	+2.4321					

BEST SPREADS +4.71 -12,974,280.69

Yield Spread Proceeds Spread

REJECT ACCEPT BEST (PROCEEDS SPREAD)

TRACK EXECUTED TRADES

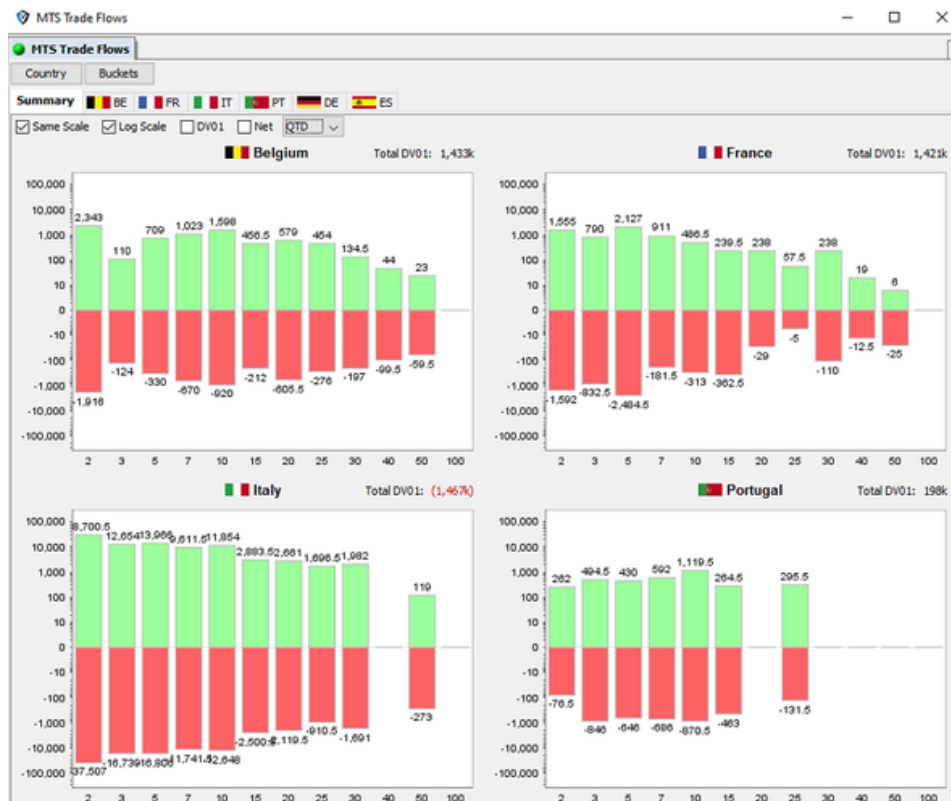
Once a trade is executed in BV, it will automatically be reflected in the RVFI trade blotter sheet. Traders can compare the executed spread with the referenced spread to see how efficient execution levels are in MTS compared to the actual spread.

Update Time	Trade	Status	Buy/Sell	RFQ Notional	Filed Avg Px/Yld	Filed Notional	Remaining Notional	Total DV01	Strategy Description
2 16:26:32	BTPS 1.35 430/BTPS 2.0 D25	Filed			/(35.9)			0	Sel 6.2mm BTPS 1.35 430, Buy 10mm BTPS 2.0 D25.
3	BTPS 1.35 430	Filed	Sell	6,200,000	94.545/1.967	6,200,000	0	(5,436)	
4	BTPS 2.0 D25	Filed	Buy	10,000,000	102.121/1.608	10,000,000	0	5,436	
6 10:06:30	DBR 1.0 825/DBR 5.625 128	Filed			/12.8			(237)	Sel 18mm DBR 1.0 825, Buy 10mm DBR 5.625 128.
7 10:05:42	BKO 0.0 920/OBL 0.25 O20/BKO 0.0 D20	Active							Sel 6.3mm BKO 0.0 920, Buy 10mm OBL 0.25 O20, Sel 3.8mm BKO 0.0 D20.

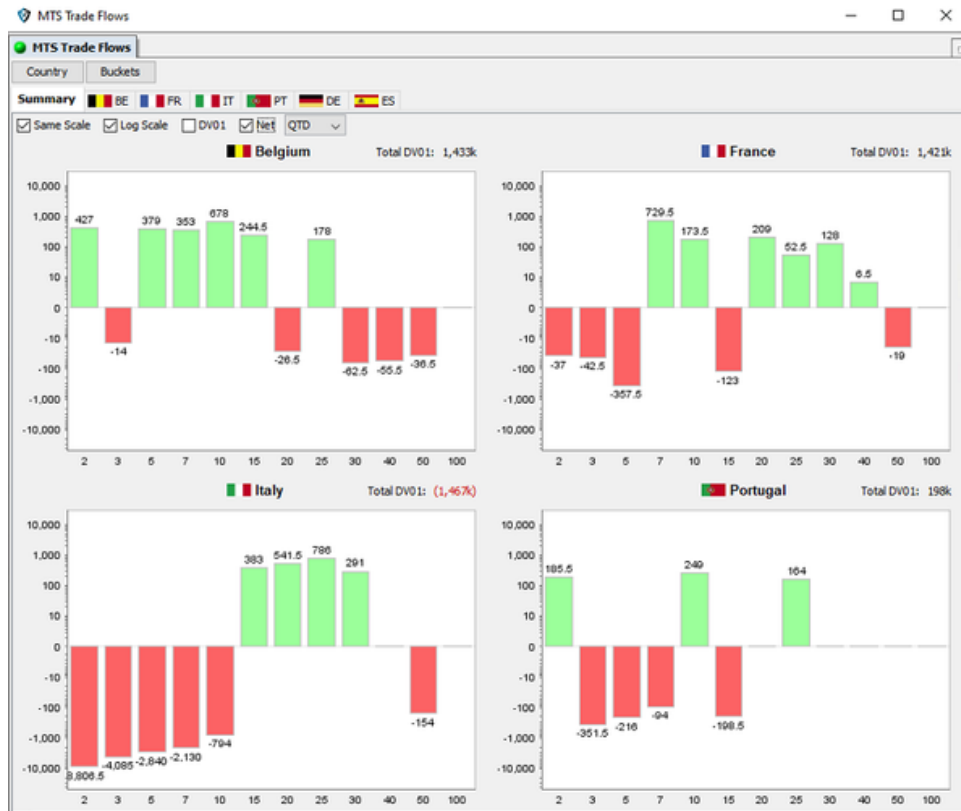
ADDITIONAL LIQUIDITY ANALYSIS

RVFI also aggregates and displays MTS' trade volume in notional and DV01 by country, sector and issue, giving traders actionable insights. Traders can drill down further into each country, sector, issue and even trade level. This arms traders with the knowledge of the most liquid countries and gives them insight into market flows of each sector and issue.

Market Flows (Notional)



Net Market Flows (Notional)



Market Flows (DV01)



Net Market Flows (DV01)



HOW TO GET STARTED

To get access to RiskVal's MTS service, a user must be authorized by MTS and have an active or trial RiskVal Pre-Trade Analytics license.

For more details, our team is available 24/5 and can be reached via any of the following channels:

- bizdev@riskval.com
- +1 212 631 0808
- IB Chat Jordan Hu